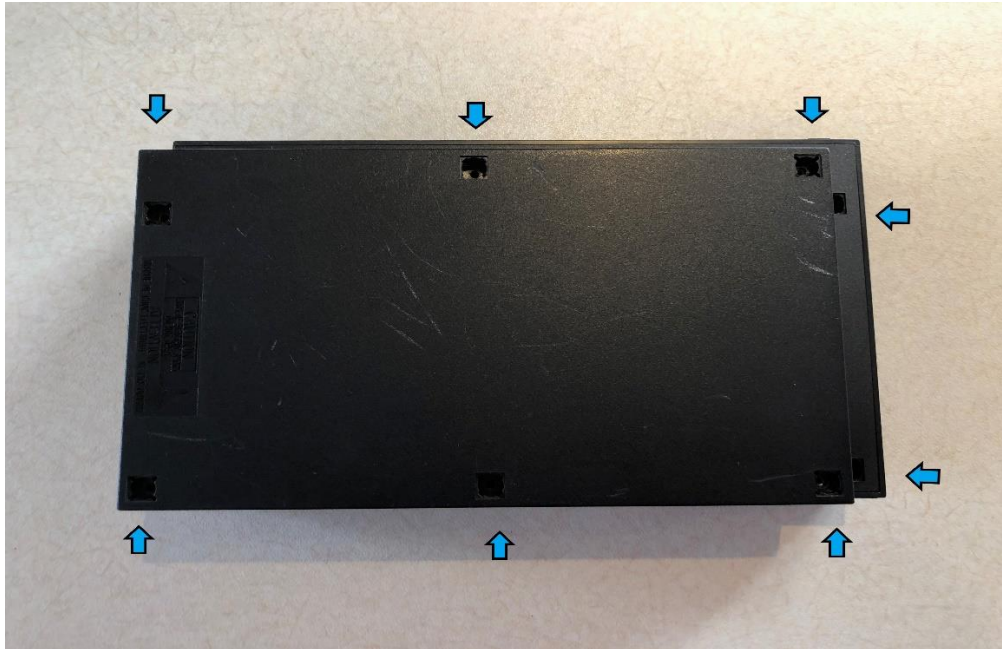


## Rexus Nexus RePS2: Installation

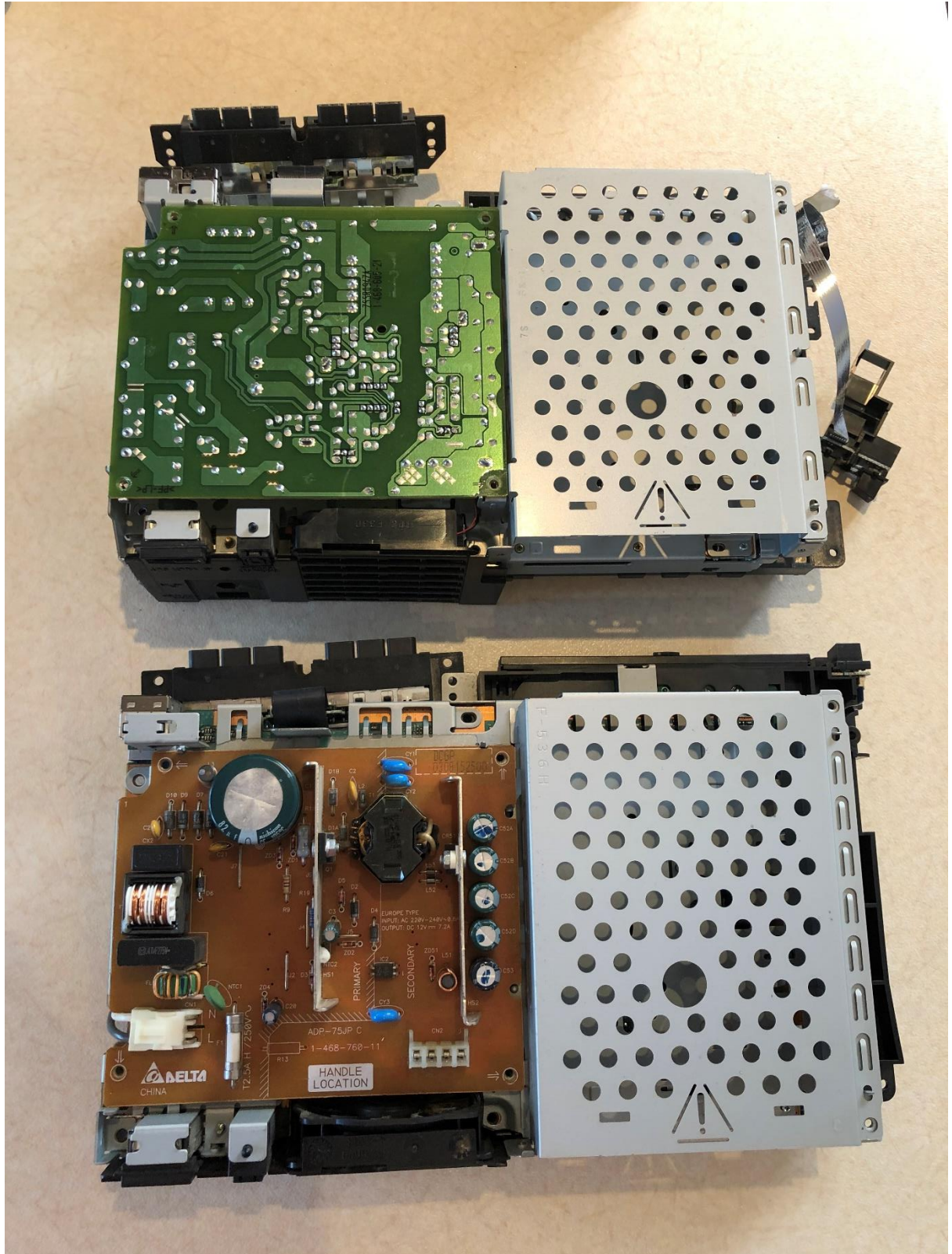
**1- Open up** your console by removing the screws from the back.



**2- Remove** the top shell and unscrew the two screws holding the controller ports (for some revisions, be careful with the ribbon that connects to the Reset & ON/OFF buttons).

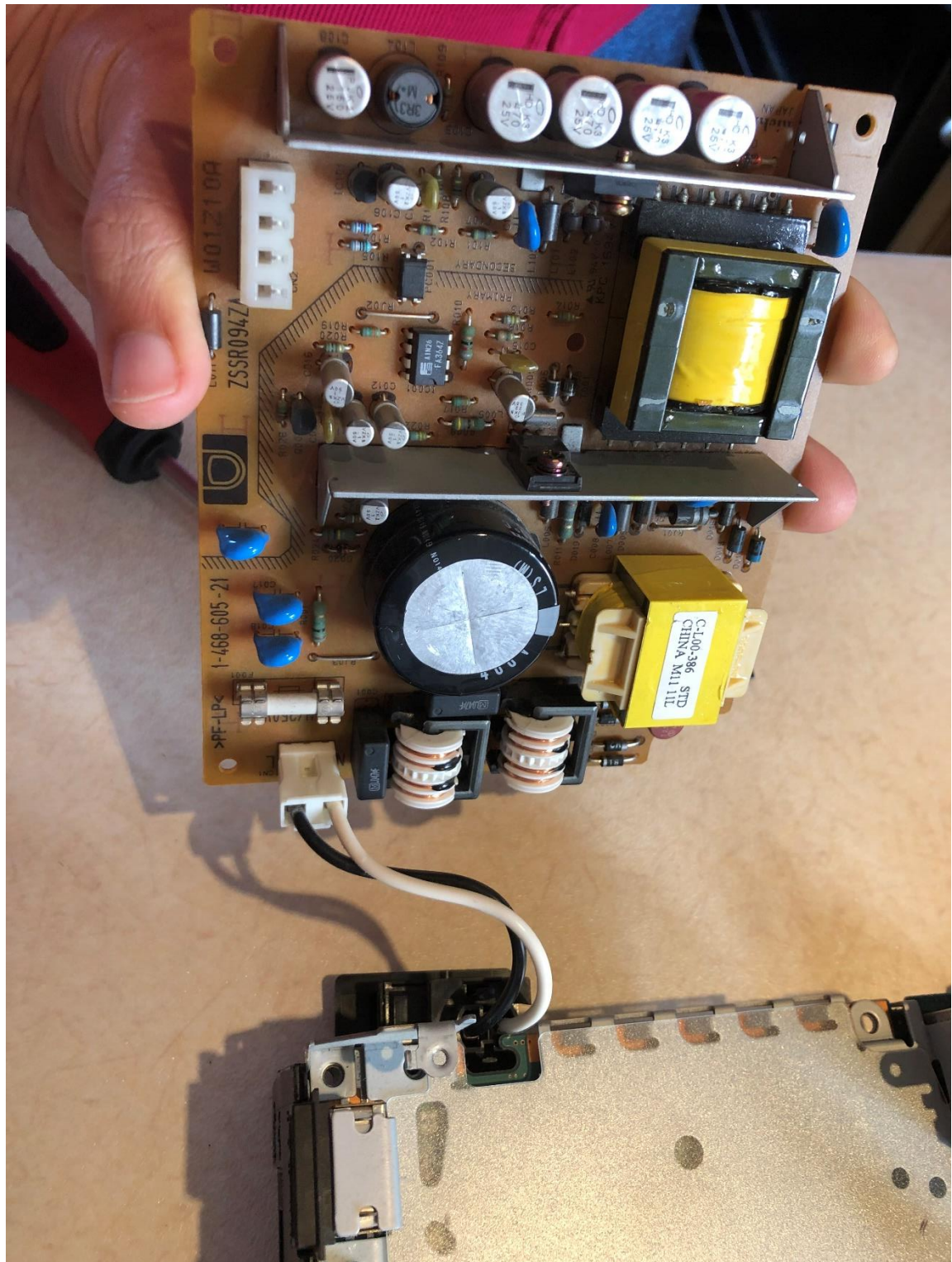


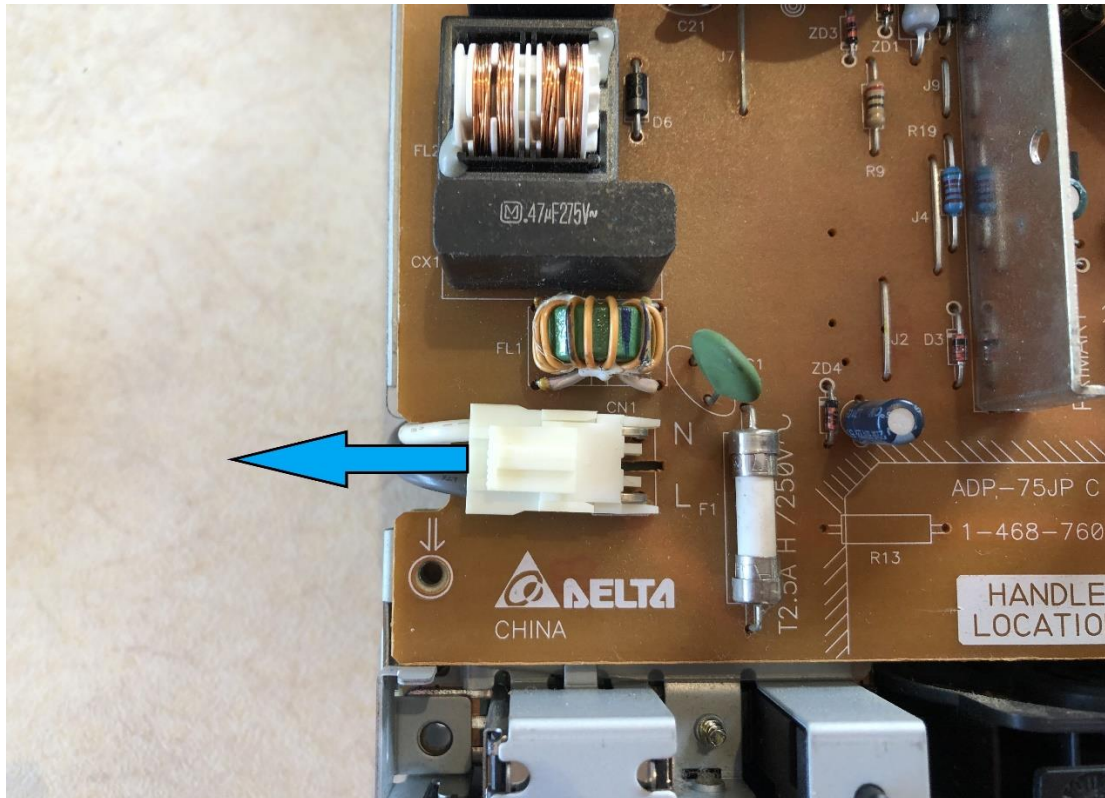
**3- Remove** the bottom shell of your console and flip the whole console over. You should be able to have access to the stock PSU now. Your console should look like one of the two below. Unscrew the 4 screws holding the stock PSU.



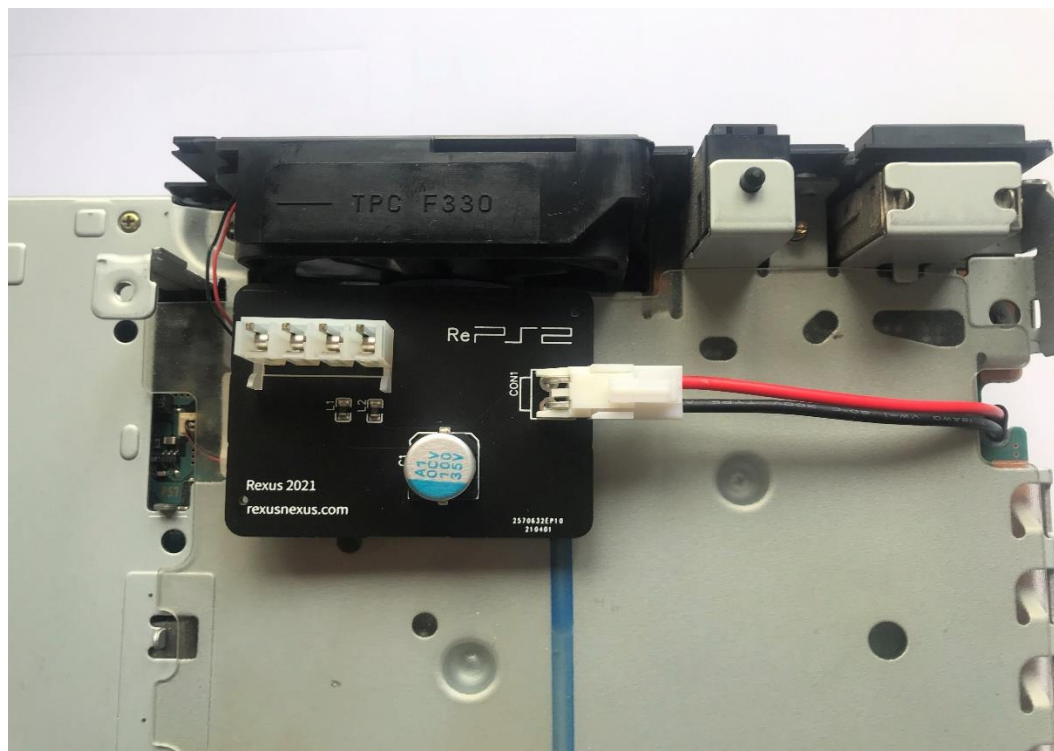


4- Unplug the cable that connects to the ON/OFF switch and pull the PSU upwards (pay attention to the area around the 4-pin connector).





5- Now you can plug the RePS2 PCB on the 4-pin connector and route the cables through the notch that leads to the other side of the board.

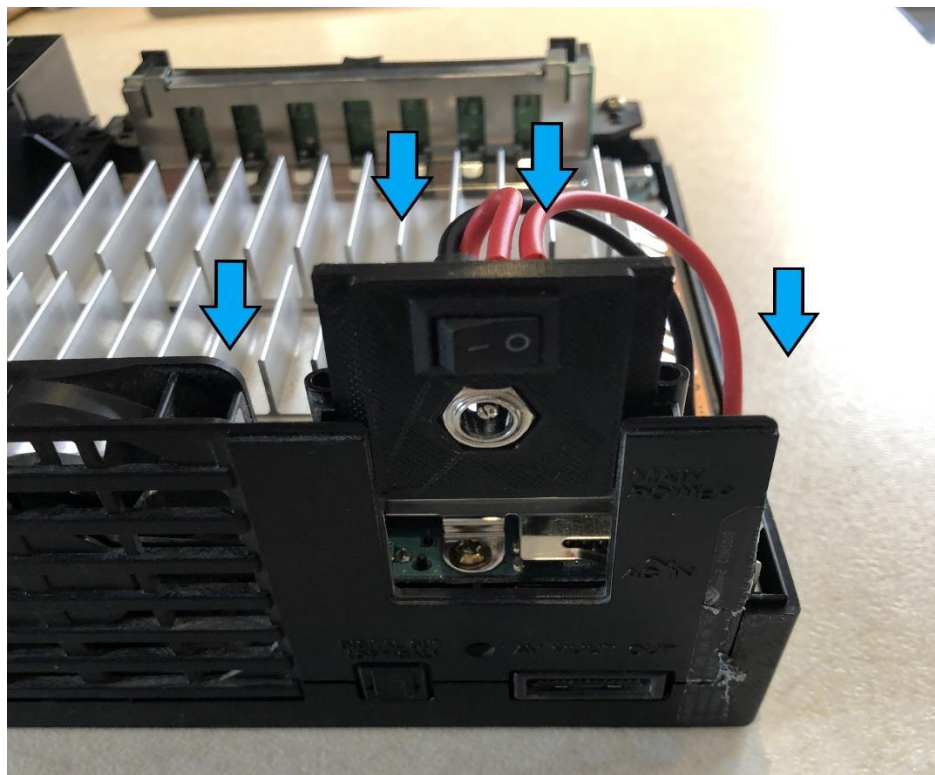




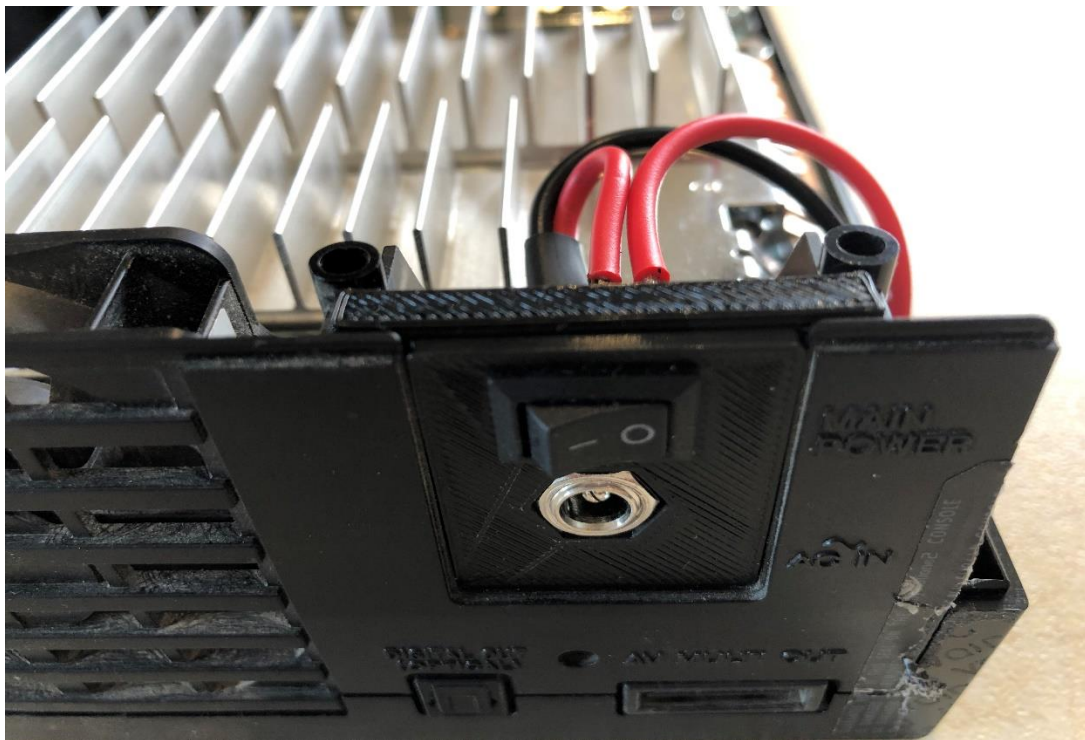
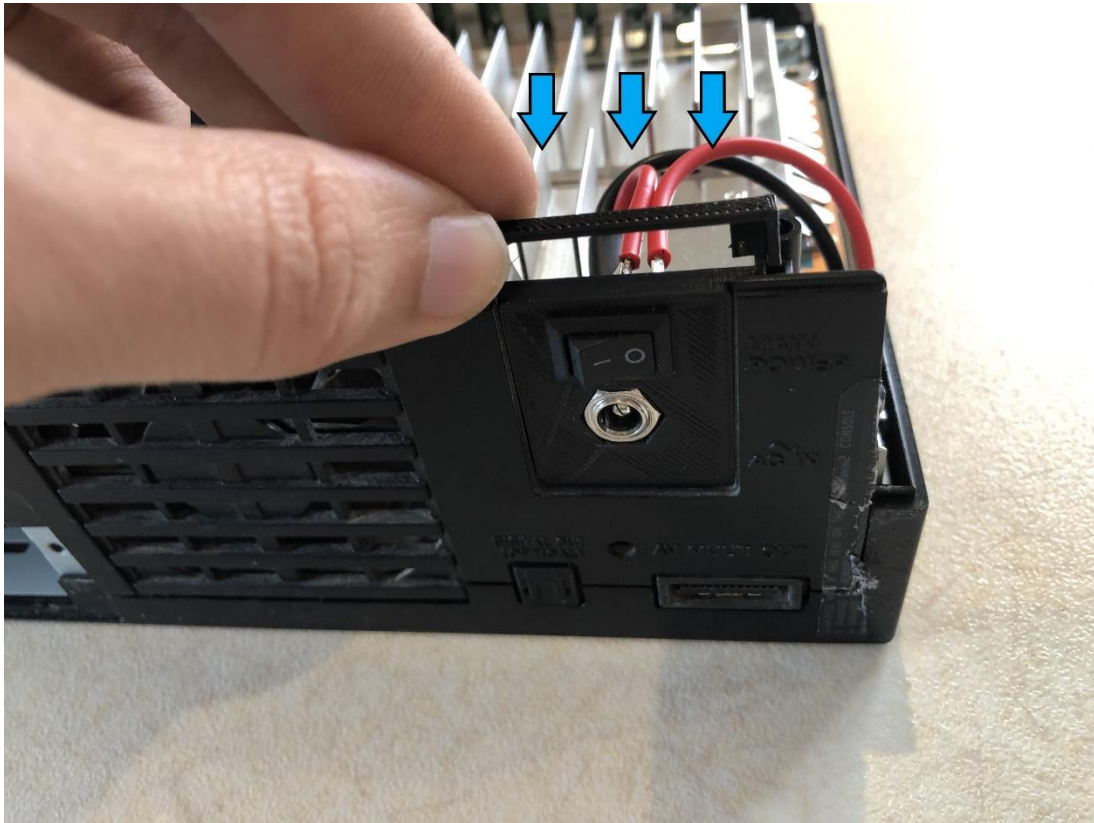
6- Remove the plate with the AC input and the ON/OFF switch by sliding it upwards.



7- Now slide the RePS2 plate back in.



8- Push the small clip that holds the new plate in place.





9- Finally, follow the reverse steps to put your console back together and plug in a 12v 5A 5.5\*2.1 positive centre adapter. Enjoy!

